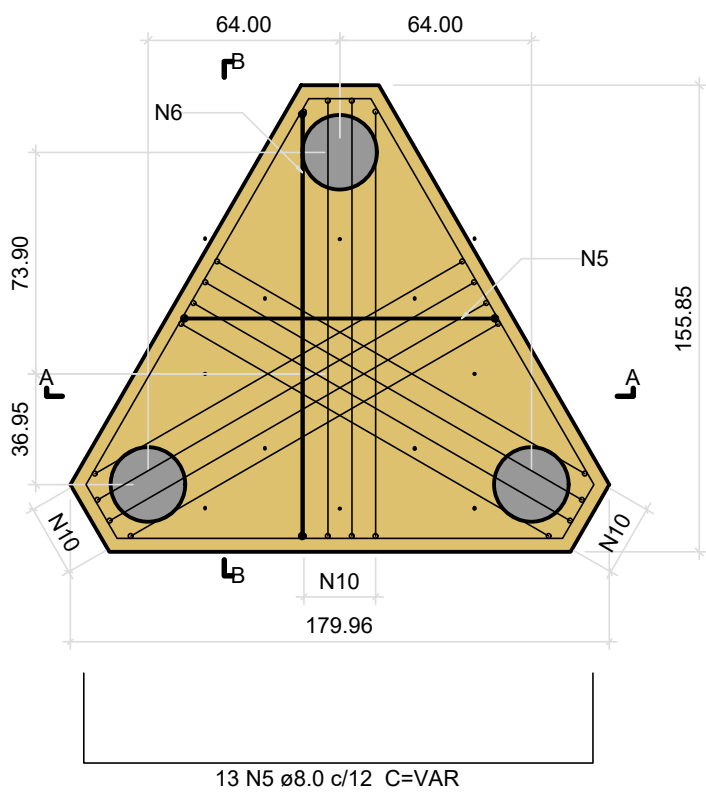
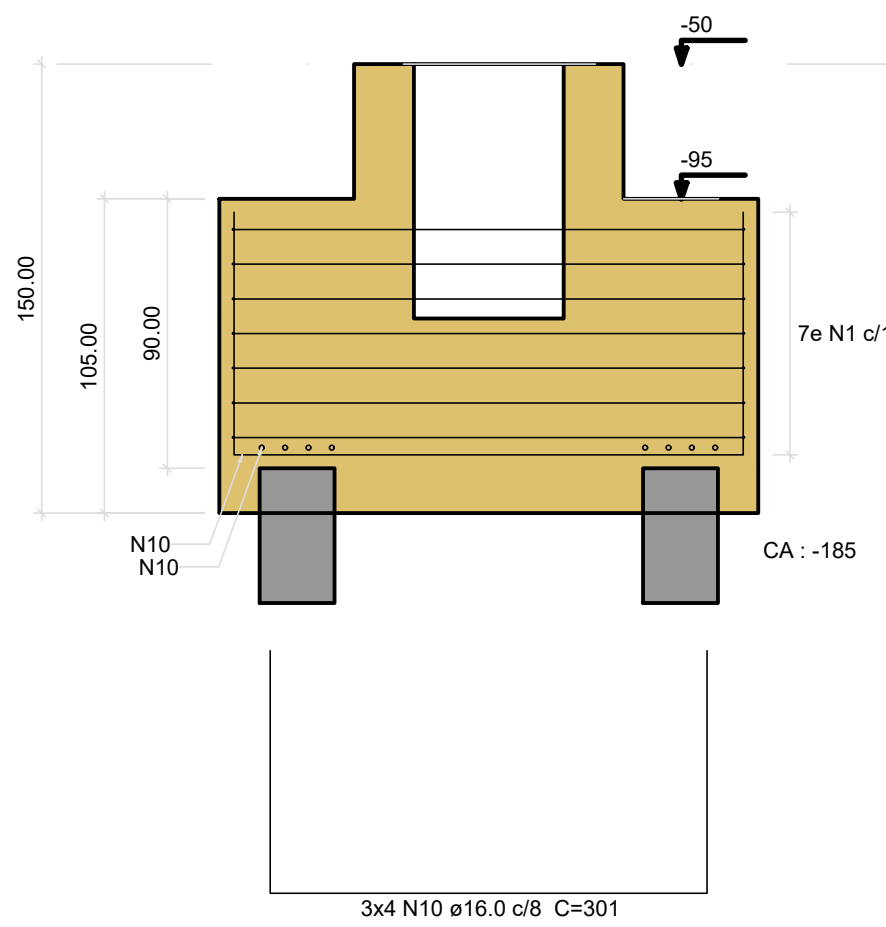


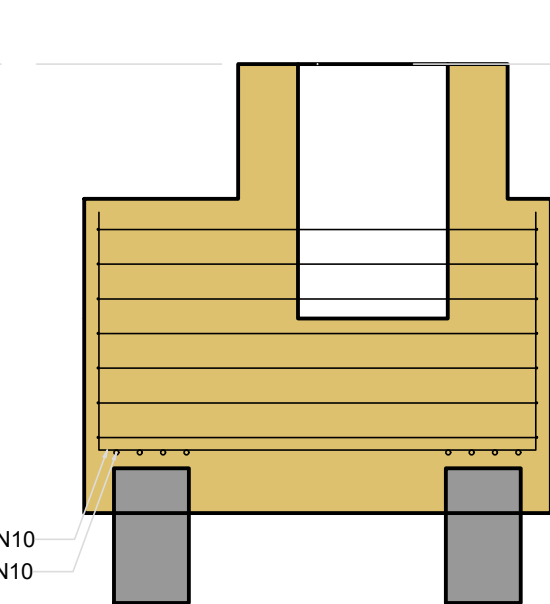
B12  
3xHÉLICE 25CM  
PLANTA  
ESC 1:25



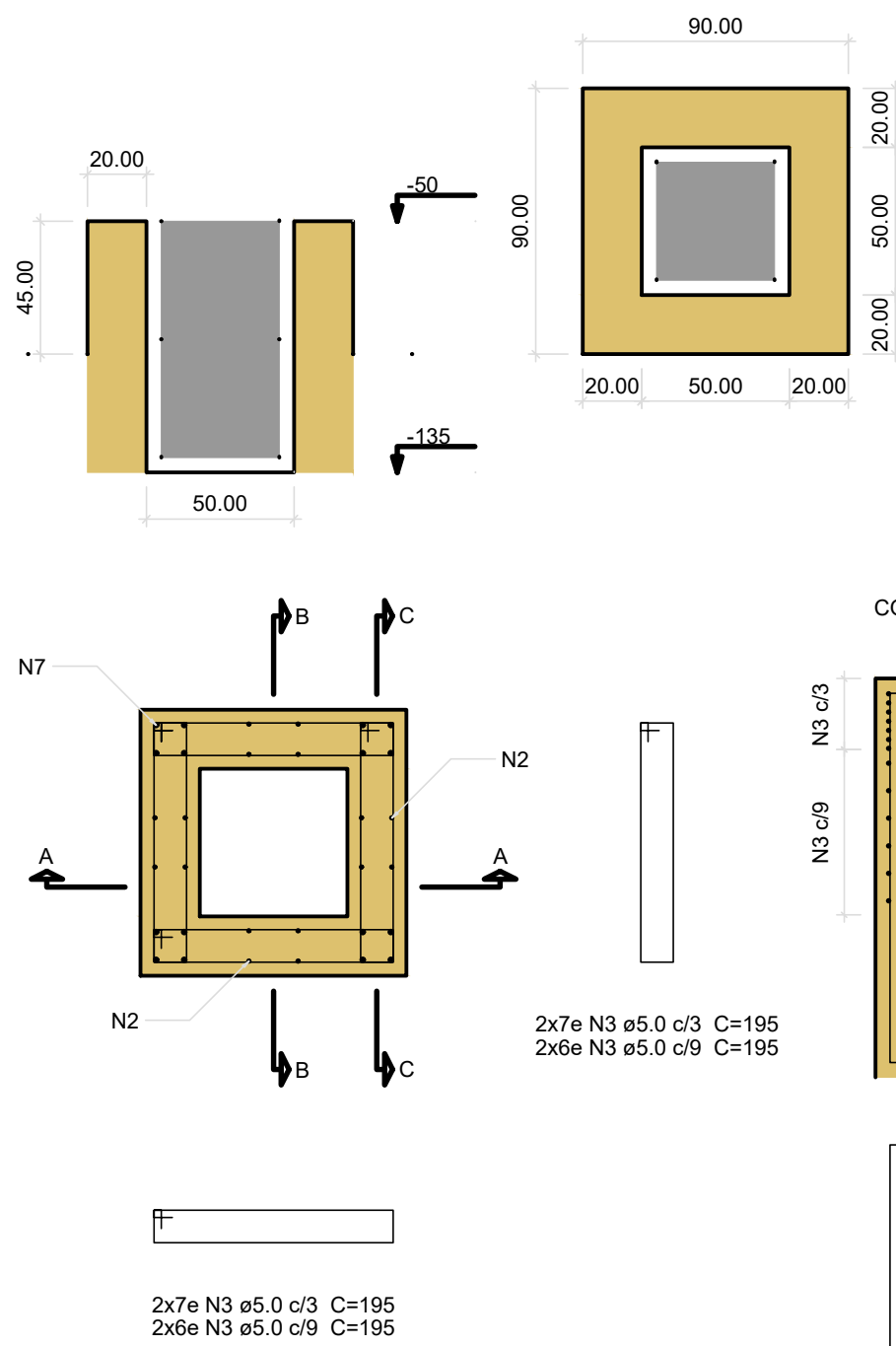
CORTE A-A  
ESC 1:25



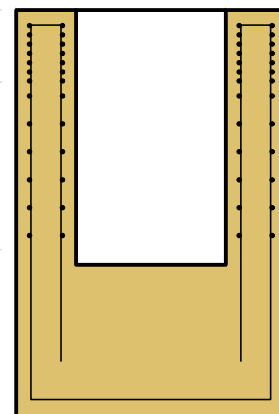
CORTE B-B  
ESC 1:25



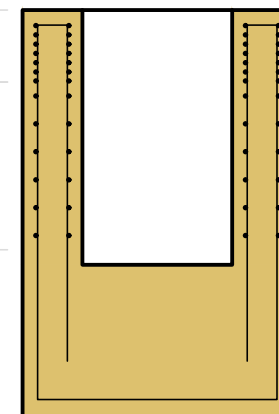
Cálce P12  
ESC 1:25



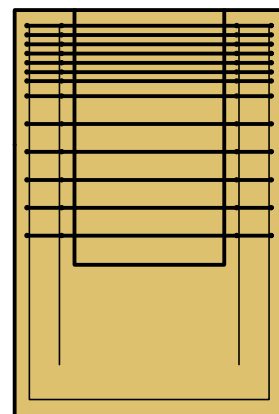
CORTE A-A



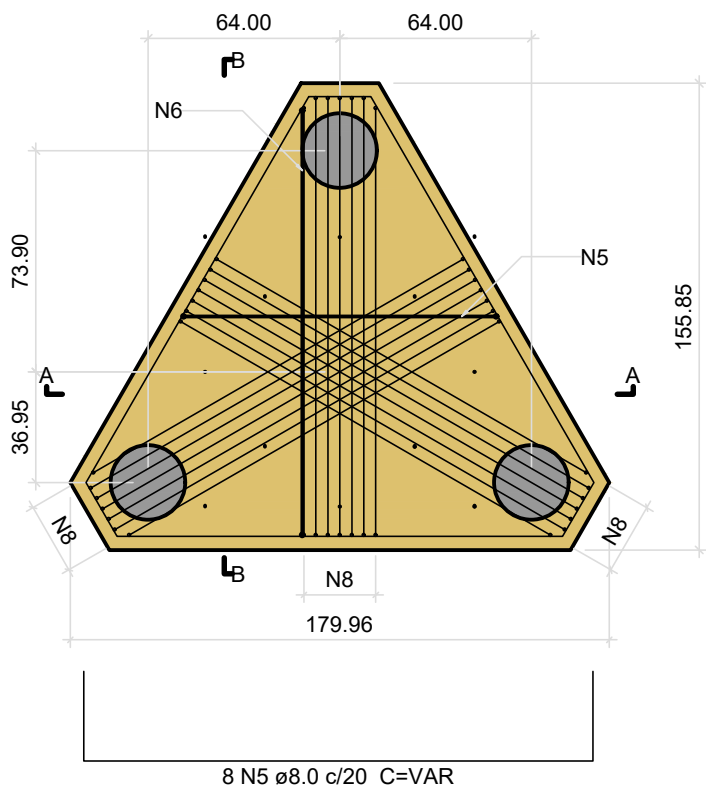
CORTE B-B



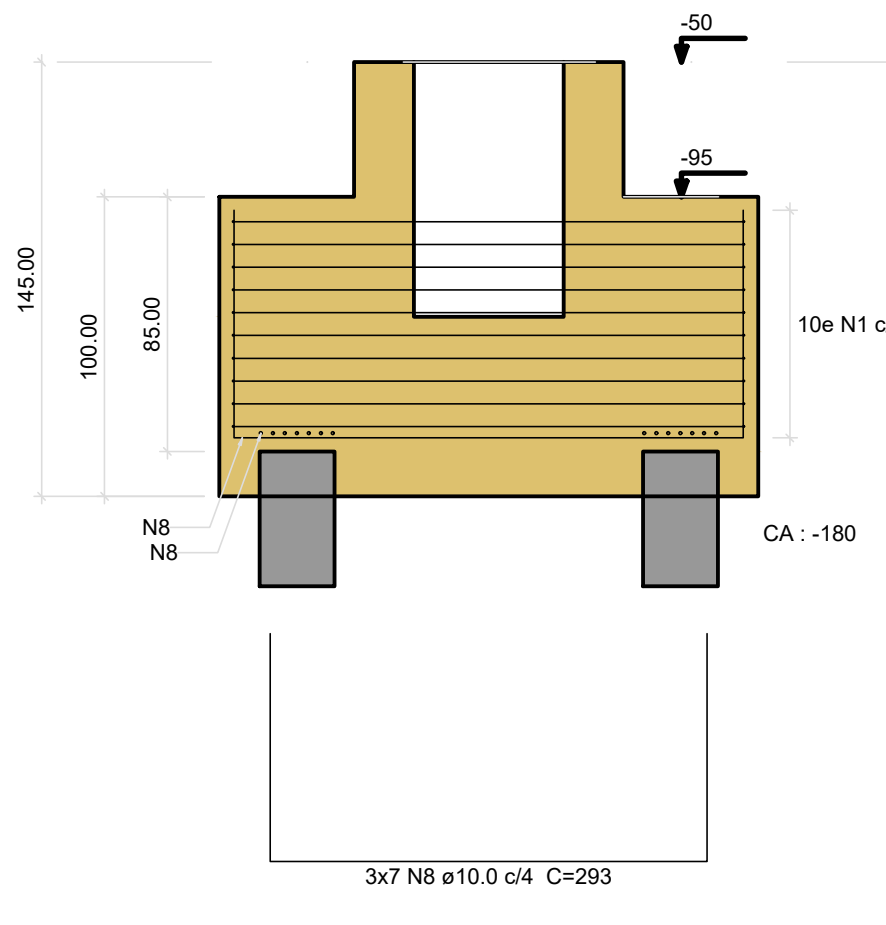
CORTE C-C



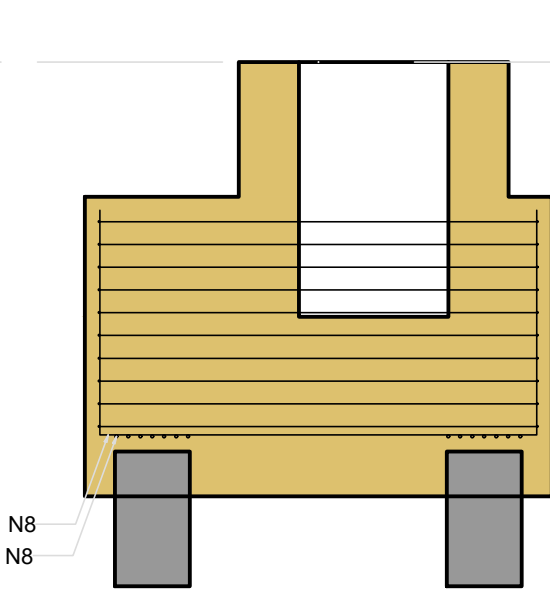
B13  
3xHÉLICE 25CM  
PLANTA  
ESC 1:25



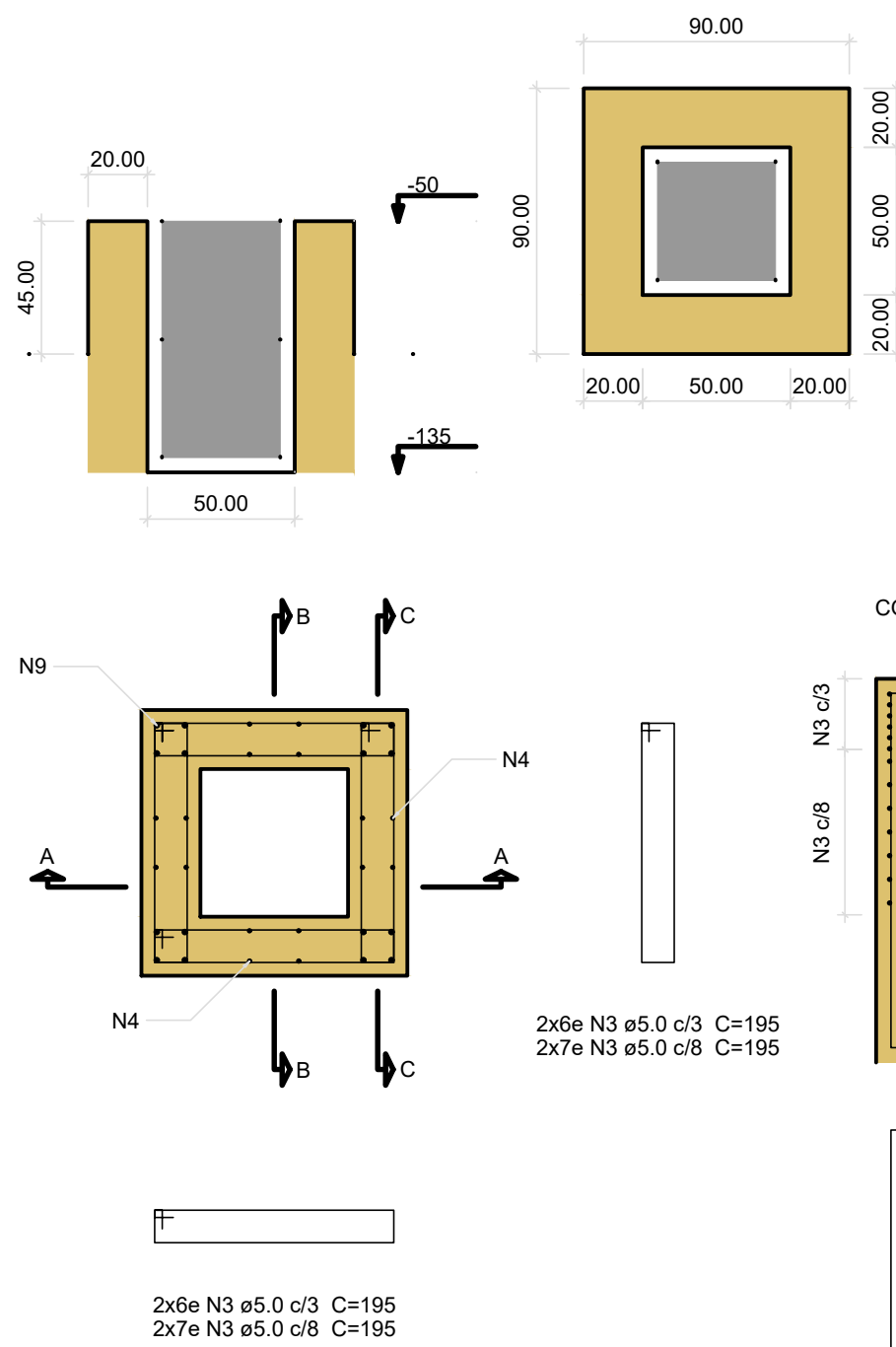
CORTE A-A  
ESC 1:25



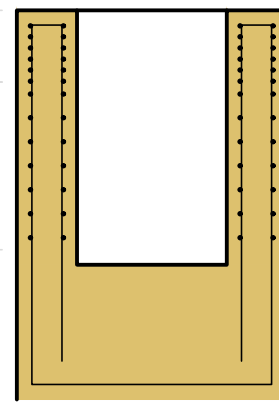
CORTE B-B  
ESC 1:25



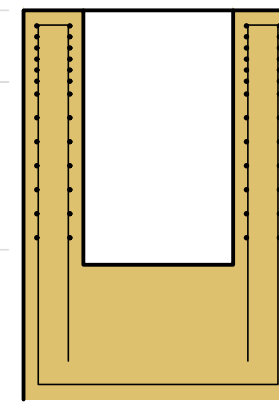
Cálce P13  
ESC 1:25



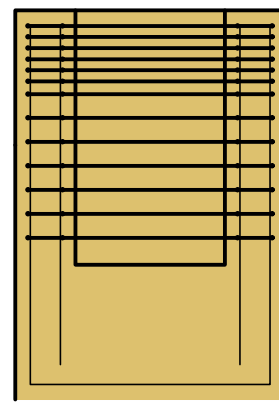
CORTE A-A



CORTE B-B



CORTE C-C



Resumo do aço

AÇO	DIAM (mm)	C.TOTAL (m)	QUANT (Barras)	PESO (kg)
CA50	8.0	96	8	37.9
	10.0	106.1	9	65.4
	16.0	36.2	4	57
CA60	5.0	336.5	29	51.9
PESO TOTAL (kg)				
CA50	160.3			
CA60	51.9			

Volume de concreto (C-30) = 3.84 m³  
Área de forma = 16.83 m²



MUNICÍPIO DE HORTOLÂNDIA

Administração  
JOSÉ NAZARENO  
ZEZÉ GOMES  
2021-2024

Projeta: FUNDAÇÃO PARA O DESENVOLVIMENTO TECNOLÓGICO DA ENGENHARIA

Obra: CONSTRUÇÕES DE ANEXOS - ENTORNO PAÇO

Local: PROLONG. ESTRADA SABINA BAPTISTA DE CAMARGO

Nº Contrato: 189/2023

Coordenador do Projeto: Antonio Carlos da Fonseca

RRT/ART: 28027230231457406  
CAU/CREA: 0600420948-SP

Visito:

Título: ESTUDOS E PROJETO DE ESTRUTURA - ANEXO II - DETALHES - BLOCOS

Código: DE-PB.3.OB.02-EST-011

Elaboração: Julio Cezar Tonetti

RRT/ART: 13700925  
CAU/CREA: A58108-9

Visito:

SECRETARIA MUNICIPAL DE OBRAS

DEPARTAMENTO DE PROJETOS - APROVAÇÃO

Data: 01/2024  
Revisão: 01

SECRETARIA MUNICIPAL DE OBRAS

DEPARTAMENTO DE OBRAS - APROVAÇÃO

Escala: IND.  
Folha: 11/43

SECRETARIA DE MOBILIDADE URBANA

DEPARTAMENTO DE PROJETOS - APROVAÇÃO